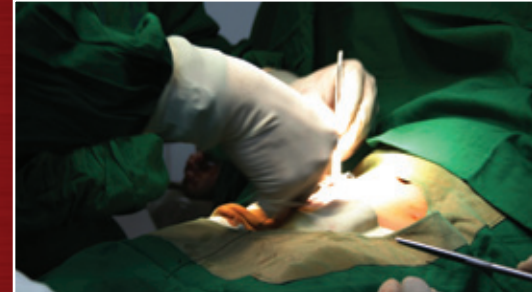


# ADPRO Customer Success Story

## Health Care and Hospitals

Staff, patients and visitors are now protected by an electronic guard that escorts them to their cars in dark and lonely hospital car parks at night.



“The impact of the system has resulted in no serious incidents since its inception in car parks, and has a positive effect on staff morale and confidence.”

— Scott Simmonds  
Simtec Surveillance and Security

### The Challenge

Hospital car parks are typically very busy, especially during visiting hours. Late at night they become lonely, poorly lit areas, tempting assaults, vandalism and theft. Staff on night shifts often have to rely on security guards to escort them to their vehicles, therefore leaving other areas unattended.

The cost of having additional security staff on hand might be tolerable for larger hospitals, but is not an option for smaller or regional facilities. The concern that security staff are unable to cover all areas within hospital grounds simultaneously has prompted smaller regional hospitals to turn to a technology solution to protect their largely female staff.

### The Solution

Several regional hospitals in the state of New South Wales (NSW), Australia have implemented an ADPRO multi-site video monitoring system to protect their car parks. By installing a series of CCTV cameras in each car park and connecting those cameras to an ADPRO FastTrace, the system provides a number of advantages over security guards.

**Location:**  
NSW, Australia  
Regionally-distributed hospitals

**Industry:**  
Health Care/Hospital

**Solutions:**

- ADPRO FastTrace  
Multi-site video security system
- ADPRO VideoCentral  
Multi-site video security manager.

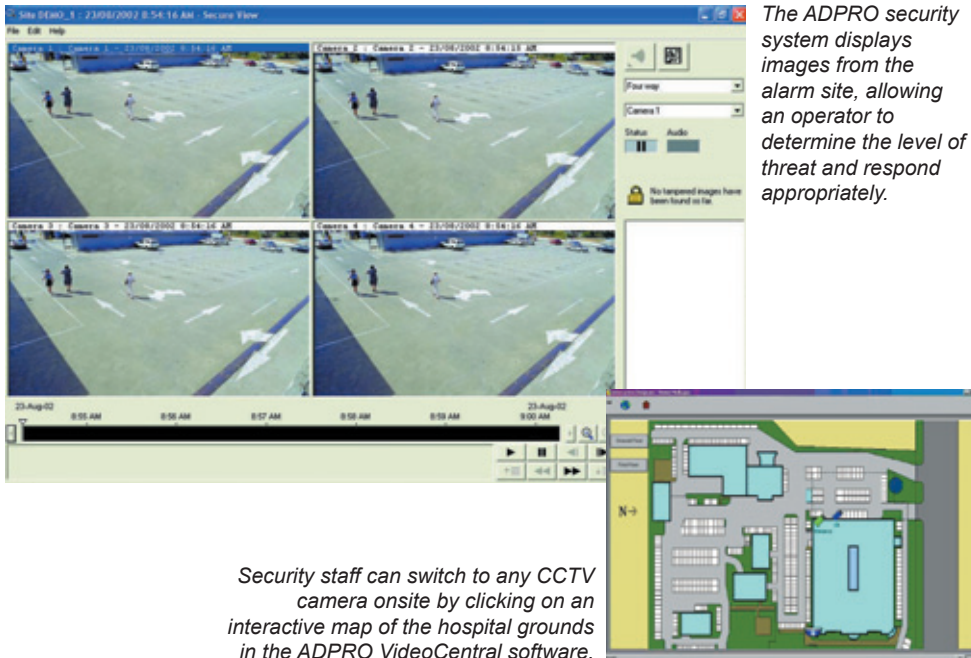
**ADPRO**<sup>®</sup>  
by  **xtralis**<sup>™</sup>

# ADPRO Customer Success Story

The ADPRO system enables security staff to perform virtual guard tours of the hospital grounds from the hospital's security station. Unlike patrolling security guards, the CCTV cameras can be everywhere at once, scanning all areas in a timely and controlled manner. These cameras relay video to the ADPRO FastTrace multi-site video security system, which is in turn connected to the centralised control station via the hospital's computer network.

Hospital staff walking in the car parks can raise alarms via wireless panic buttons as well as hard wired panic buttons, located in view of a camera. The alarms trigger the capture and transmission of images from the closest camera back to the security station.

An operator at the station can then quickly assess what caused the alarm and respond appropriately. For example, if the images show someone being assaulted then an audio announcement to the area can be made and security guards dispatched immediately to the scene. If the images show someone attempting to break into a car an audio announcement such as "You near the Toyota Camry. You are being observed. Leave immediately or the Police will be called." may be all that is needed.



*The ADPRO security system displays images from the alarm site, allowing an operator to determine the level of threat and respond appropriately.*

*Security staff can switch to any CCTV camera onsite by clicking on an interactive map of the hospital grounds in the ADPRO VideoCentral software.*

## The Results

Since installation of the ADPRO FastTrace, problem spots in these regional hospitals have been virtually eliminated. Regular physical patrols are no longer required, enabling more cost-effective use of security resources and funds. Night staff now simply contact the security station before leaving the building and the security station monitors the employee on camera until they reach their vehicle safely. This solution has assisted hospitals in providing a safer work environment and reduced their public liability risk.

One regional hospital system that has implemented an ADPRO security system is the Greater Western Health Service. It encompasses 20 hospitals, each connected via a ADSL network, with another 40 hospitals to be added within the next 2 years. Responsible for installation of video monitoring systems at these hospitals, Scott Simmonds from Simtec Surveillance and Security offers the following comment: "The impact of the system has resulted in no serious incidents since its inception within the hospital grounds, and has had a positive effect on staff morale and overall employee confidence."

[www.xtralis.com](http://www.xtralis.com)

**The Americas** +1 781 740 2223 **Asia** +852 2916 8894 **Australia and New Zealand** +61 3 9936 7000  
**Continental Europe** +32 56 24 19 51 **UK and the Middle East** +44 1442 242 330

The contents of this document are provided on an "as is" basis. No representation or warranty (either express or implied) is made as to the completeness, accuracy or reliability of the contents of this document. The manufacturer reserves the right to change designs or specifications without obligation and without further notice. Except as otherwise provided, all warranties, express or implied, including without limitation any implied warranties of merchantability and fitness for a particular purpose are expressly excluded.

This document includes registered and unregistered trademarks. All trademarks displayed are the trademarks of their respective owners. Your use of this document does not constitute or create a licence or any other right to use the name and/or trademark and/or label.

This document is subject to copyright owned by Xtralis AG ("Xtralis"). You agree not to copy, communicate to the public, adapt, distribute, transfer, sell, modify or publish any contents of this document without the express prior written consent of Xtralis.

Document: 10927\_04

**ADPRO**<sup>®</sup>  
by **xtralis**<sup>®</sup>